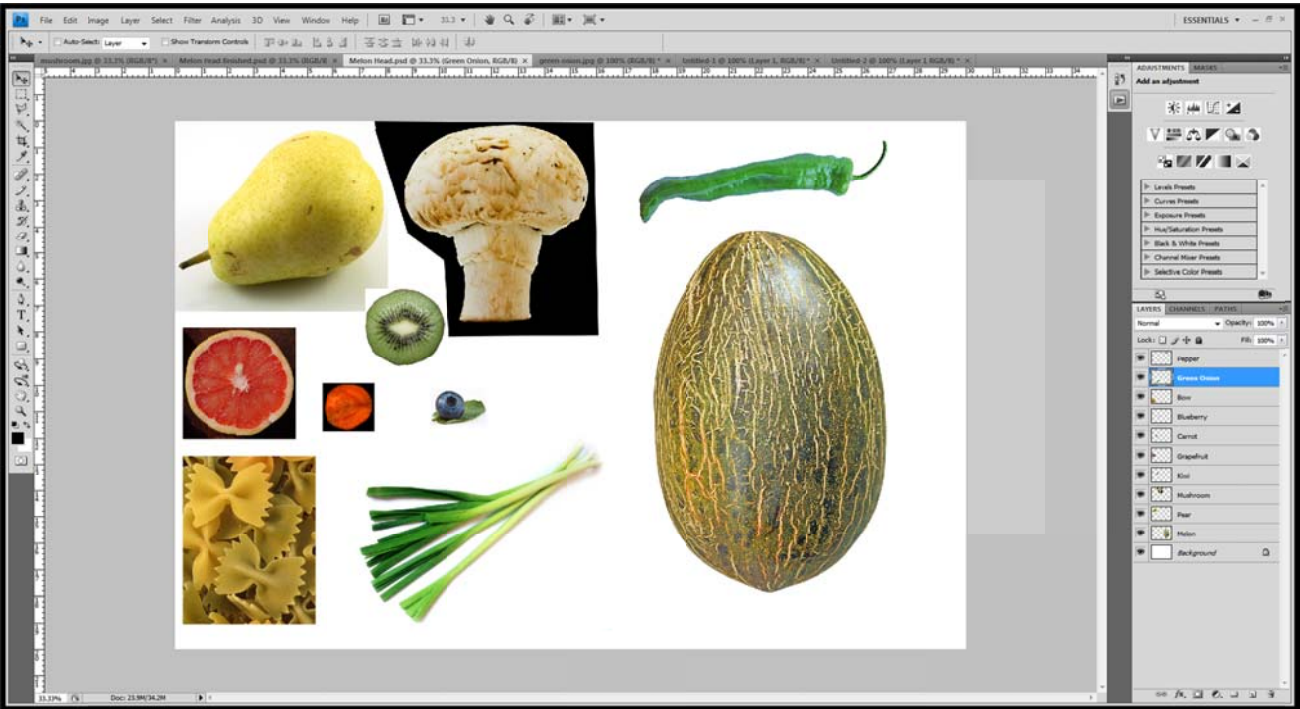
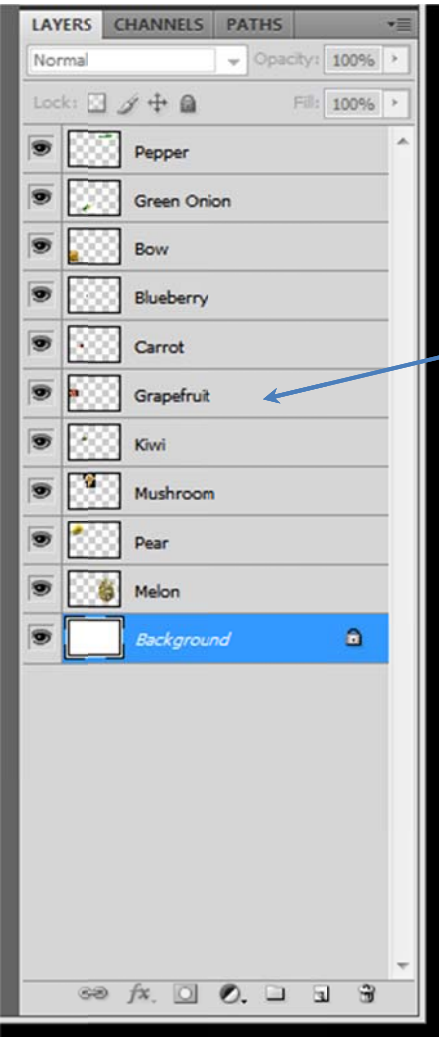


PS1 – Melon Head: Using the Right Tools

Using Photoshop, open the file: Melon Head.psd



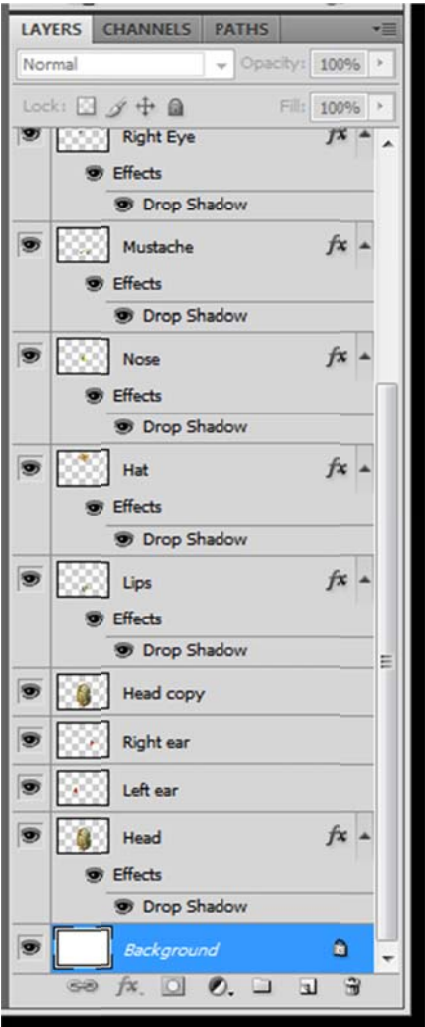
Notice that the file type is .psd. This is a Photoshop file and can only be opened with Photoshop.



The purpose of this assignment is to use various selection tools to grab the fruit and veggies on the left and make a face out of the melon on the right.

I will walk you through some of the selection tools that will work the best and I'll also show you have to move and copy selections using the mouse and keyboard shortcuts.

To start, notice that each layer is named for what it is. As you manipulate each fruit or vegetable you will rename each appropriately, i.e. pear will become nose and mushroom will become hat.

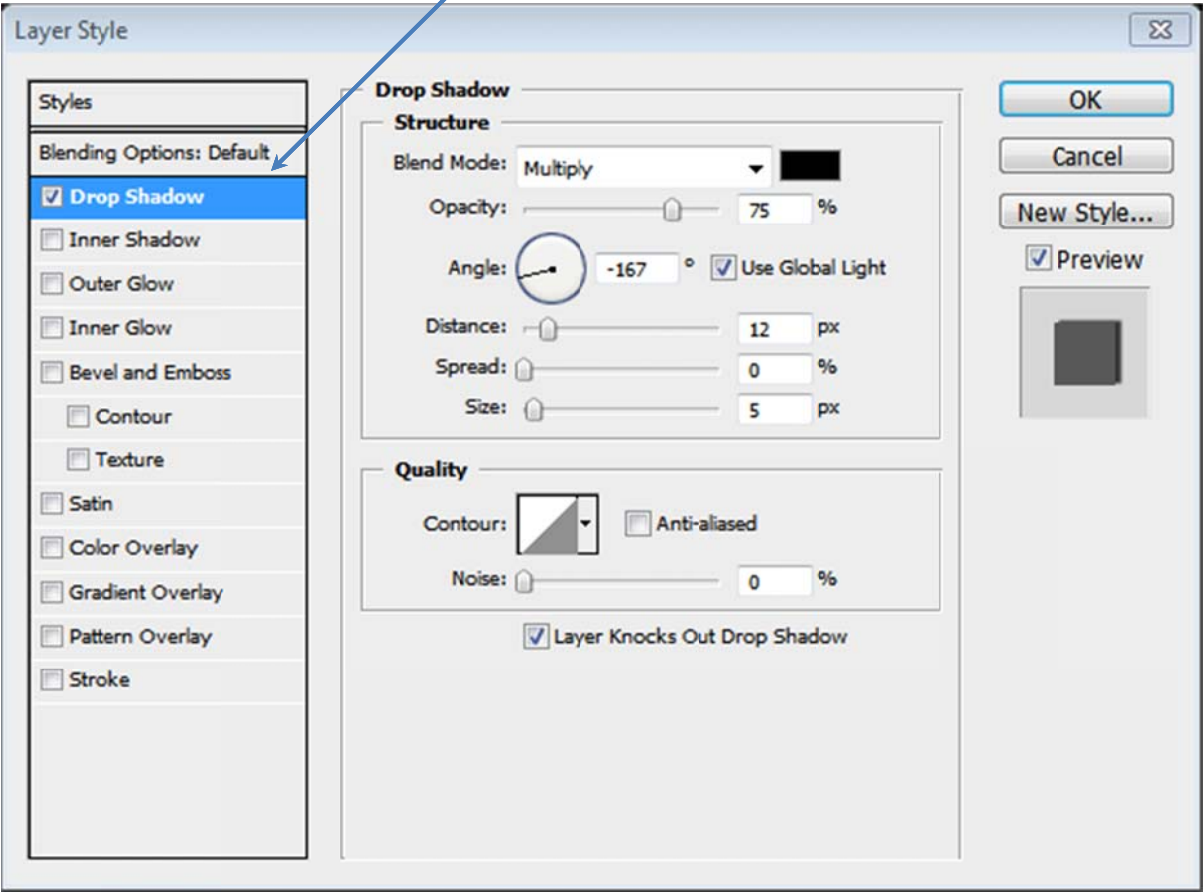


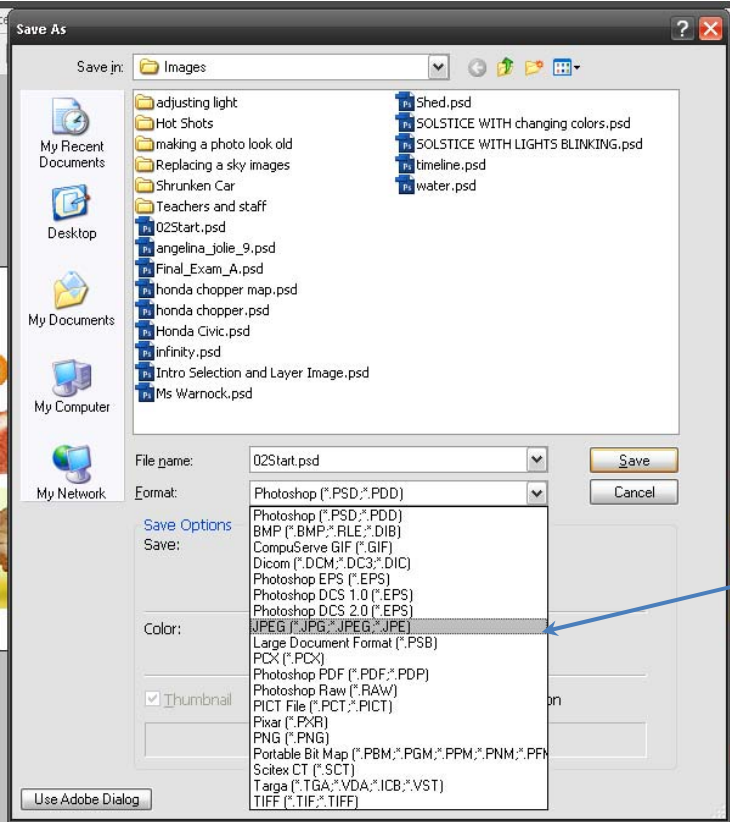
When you're finished, the image should look like this:



Make sure to centre the head on the page.

To make the face look a little more real you will apply drop shadows to each of the facial features. You can do this by double clicking on the highlighted layer and adjusting the shadow angle, distance spread and size.





When the file is completed, save it with the proper naming convention gr?_Name_PS1.

Save it a second time as a jpg image. Use save as, pull down the arrow and select jpg from the list.

Criteria	Out of	Mark
Facial features are clean	10	
Features are rotated	10	
Features are sized well	10	
Layers are named appropriately	15	
Drop shadows used	10	
Final project is centred	10	
File is named correctly	-2	
Total	65	